

Notes on Playing Tablature

This document provides information on how to read the TAB.

Even if you've seen TAB notation before, one thing you should know is that there is no standard for notating in TAB as there is for Standard Notation. They are all similar, but different enough that it can be confusing.

Common Rules:

- Each line of the TAB represents a string of the guitar.
- The top line is the highest pitched string,
- and bottom line is the lowest pitched string.
- The numbers that appear on a line represent the fret that is suppose to be fretted.
- The number 0 represents an open string.

Unique Rules:

These are pretty much unique to the TAB package being used. In this case, the rules here apply to the TAB for this piece which was created using Guitare Pro TAB software.

Effects:

Pull-Off: Designated by the characters "PO" between the two notes

Hammer: Designated by the characters "HO" between the two notes

Slide Up: Designated by the characters "sl" and a line going upward from left to right between the two notes

Slide Down: Designated by the characters "sl" and a line going downward from left to right between the two notes.

Harmonics: Designated by the letter "H" above the notes to be played this way.

Duration:

Some TAB notation packages provide note timing information with the TAB. Guitare Pro is one of those.

Whole Note: No line under the beat

Half Note: A short line under the beat (very difficult to tell from a quarter note)

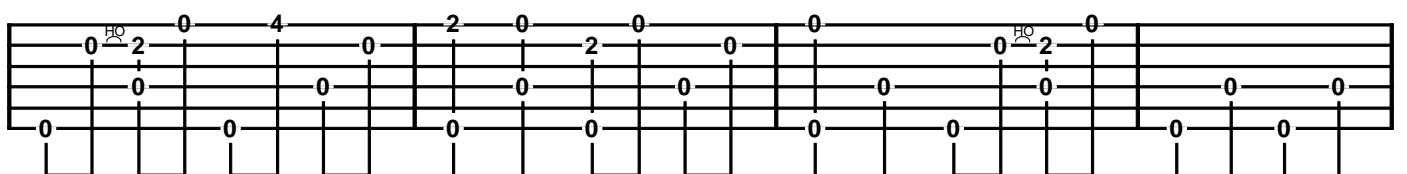
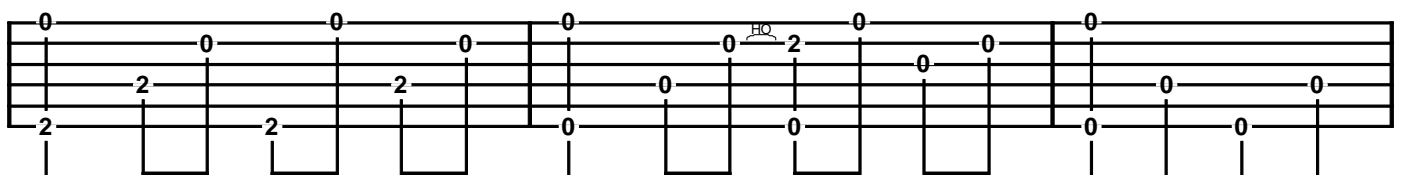
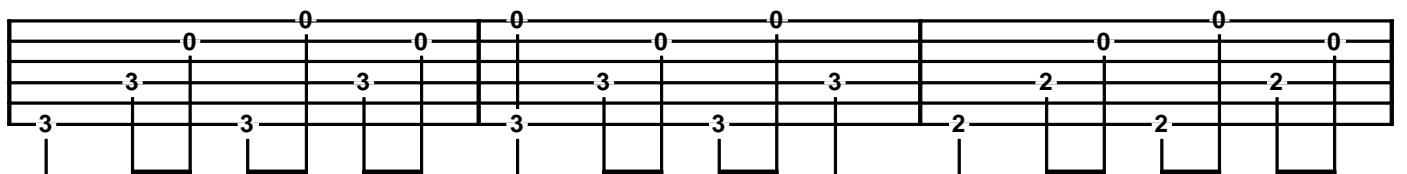
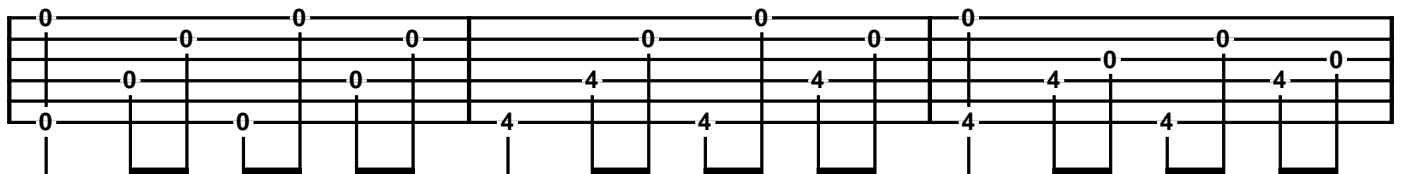
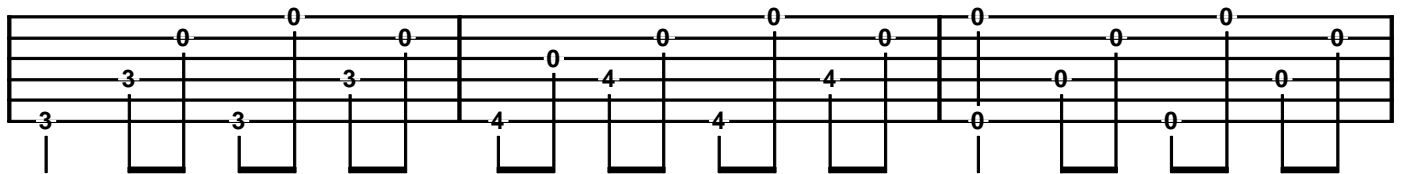
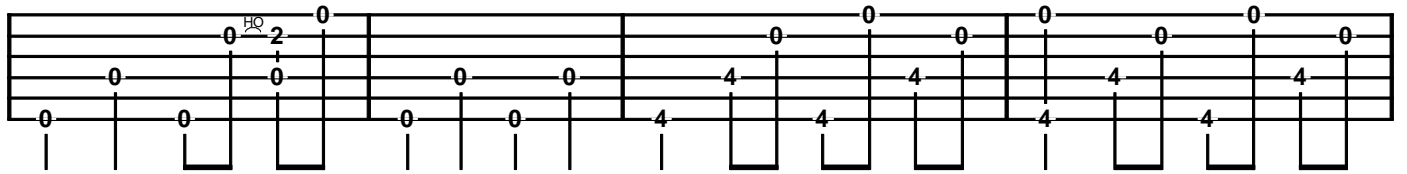
Quarter Note: A longer line under the beat

Eighth Note: A flag or beam at the bottom and to the right of the line

Sixteenth Note: Two flags or beams at the bottom and to the right of the line

Rests:

Quarter, Eighth, Half, and Whole Rests are indicated the same as in standard notation.



0 2 0 4 0 2 0 0 2 2 2 2

0 2 0 4 0 2 0 2 0 0 0 2 0

4 0 0 4 0 4 0 0 3 3

0 4 4 0 0 0 0 0 0 0

4 4 4 0 4 0 4 0 3 3

reduce tempo for 2 measures

0 3 3 2 2 2 2 2 2

2 0 2 0 2 0 2 0 2 1 0 0

2 0 2 0 2 0 2 0 1 0 1 0

0 1 0 1 0 HQ 2 0 0 0 HQ 2 0

1 0 1 0 0 0 0 0 0 0 0 0

2 0 2 1 0 1 0 HQ 2 0 0

2 0 2 1 0 1 0 0 0 0 0 0

0 HQ 2 0 2 2 sl 4 0 2 0 0

0 0 0 0 0 2 0 2 0 0 0 0

0 0 0 0 0 0 0 2 0 2

0 2 sl 4 0 2 sl 4 0 0 0 2 0 2

2 sl 4 0 2 0 0 0 0 9 7 9

0 0 0 0 0 0 2 sl 4 0 0 0 0

0 0 0 0 0 0 0 2 0
0 0 2 4 0 2 4 0 0 2 2 0

2 0 0 0 0 0 9 7 9
0 0 0 0 0 2 4 0 0 0 0 0

7 9 7 9 7 9 7 9 7 9
0 0 0 0 0 0 0 0 0 0 0 0

0 7 9 7 9 7 9 7 9
0 0 0 0 0 0 0 0 0 0 0 0

10 9 7 0 0 0 0 0 0
0 0 0 0 0 0 4 4 4 4 0 0

0 0 0 0 0 2 0 0 0 0 2 0
3 3 3 3 0 0 0 0 0 0 0 0

First staff of guitar tablature. It consists of six lines representing the strings. The notes are indicated by numbers 0, 2, 3, and 4. There are slurs over groups of notes, and a 'HQ' (harmonic) marking above a note on the second line. The rhythm is indicated by vertical stems and flags.

Second staff of guitar tablature. It consists of six lines representing the strings. The notes are indicated by numbers 0, 2, and 4. There are slurs over groups of notes, and a 'HQ' (harmonic) marking above a note on the second line. The rhythm is indicated by vertical stems and flags.

Third staff of guitar tablature. It consists of six lines representing the strings. The notes are indicated by numbers 0, 2, and 4. There are slurs over groups of notes. The rhythm is indicated by vertical stems and flags.

Fourth staff of guitar tablature. It consists of six lines representing the strings. The notes are indicated by numbers 0, 2, 4, and 12. There are slurs over groups of notes. The rhythm is indicated by vertical stems and flags.

Fifth staff of guitar tablature. It consists of six lines representing the strings. The notes are indicated by numbers 0, 7, 10, and 12. There are slurs over groups of notes. The rhythm is indicated by vertical stems and flags.

Sixth staff of guitar tablature. It consists of six lines representing the strings. The notes are indicated by numbers 0, 4, 7, and 12. There are slurs over groups of notes. The rhythm is indicated by vertical stems and flags.

0 0 0 0 | 0 0 0 0 | 2 0

0 0 0 0 | 0 0 0 0 | 0 2 0 2

0 2 4 4 | 0 2 4 4 | 0 0 0 0

2 4 0 0 | 0 0 0 0 | 9 7 9

0 0 0 0 | 0 0 0 0 | 0 0 0 0

0 0 0 0 | 0 2 4 4 | 0 0 0 0

7 9 7 9 | 7 9 7 9 | 7 9 7 9

0 0 0 0 | 0 0 0 0 | 0 0 0 0

0 0 0 0 | 0 0 0 0 | 0 0 0 0

0 7 9 | 7 9 7 9 | 7 9 7 9

0 0 0 0 | 0 0 0 0 | 0 0 0 0

0 0 0 0 | 0 0 0 0 | 0 0 0 0

10 9 7 9 | 0 0 0 0 | 0 0 0 0

0 0 0 0 | 0 0 0 0 | 4 4 4 4

0 0 0 0 | 0 0 0 0 | 4 4 4 4

0 0 0 0 | 0 0 2 0 | 0 0 2 0

3 3 3 3 | 0 0 0 0 | 0 0 0 0

3 3 3 3 | 0 0 0 0 | 0 0 0 0

First system of guitar tablature. The top staff contains fret numbers: 0, 0, 0, 0, 0, 0, 0, 0, 0, 0, 2, 0. The middle staff contains fret numbers: 4, 4, 4, 3, 3, 3, 0, 0. The bottom staff contains fret numbers: 4, 4, 3, 3, 0, 0. A 'HQ' marking is above the second measure.

Second system of guitar tablature. The top staff contains fret numbers: 0, 0, 2, 2, 2, 2, 4, 0, 2, 0, 0. The middle staff contains fret numbers: 0, 0, 0, 2, 0, 2, 0, 0, 0, 0, 0. The bottom staff contains fret numbers: 0, 0, 0, 0, 0, 0, 0, 0, 0, 0, 0. 'HQ' and 'sl' markings are present.

Third system of guitar tablature. The top staff contains fret numbers: 0, 0, 0, 0, 0, 0, 2, 0. The middle staff contains fret numbers: 0, 0, 2, 2, 0, 0, 0, 2, 0, 2. The bottom staff contains fret numbers: 0, 2, 2, 0, 2, 0, 0, 0, 0, 0. 'sl' markings are present.

Fourth system of guitar tablature. The top staff contains fret numbers: 2, 4, 0, 2, 0, 0, 0, 0, 0, 0, 0, 0. The middle staff contains fret numbers: 0, 0, 0, 0, 0, 0, 0, 0, 0, 0, 0, 0. The bottom staff contains fret numbers: 0, 0, 0, 0, 2, 2, 0, 2, 4, 4, 0, 0. 'sl' markings are present.

Slow Tempo to end

Fifth system of guitar tablature. The top staff contains fret numbers: 2, 2, 4, 0, 2, 0, 0, 0, 0, 0, 0, 0, 12, 12, 12. The middle staff contains fret numbers: 0, 2, 2, 0, 0, 0, 0, 0, 0, 0, 0, 0, 0, 0, 0. The bottom staff contains fret numbers: 0, 0, 0, 0, 0, 0, 0, 0, 2, 4, 4, 0, 0, 0. 'sl' and 'H' markings are present.

H

Diagram of a guitar fretboard showing the 12th fret. The fret number '12' is written below the diagram.